

imants[®]

Digging the future

imants

27SX

imants

JNC

80-250 cm / 31-98" working width

For rotavators: working width = machine width

15-65cm (6-26") working depth

For rotavators: 16-25 cm / 6-10"
For spading: 15-45 cm / 6-18" (SX),
15-65 cm / 6-26" (WX)

Spading & Rotavating Horticulture

- Time saving
- Good mixing
- Improves the water balance
- Incorporates organic material
- Seedbed in one working passage
- Quality and robust
- Good soil structure
- Elimination of compaction
- Fuel saving
- Cost effective
- No plough pan
- All-round machine

THE IMANTS PHILOSOPHY

Spading is more than just turning around

More than 60 years of experience with spading machines is something Imants can look back on. From that experience we learned that spading is more than just turning soil. Much more even. Spading means mixing organic material with the living topsoil, it means working crop residues under and creating a seedbed, it means mixing in green manure so that it can be broken down into nutrients for the next crop.

In short, both on the soil and in the furrow you can speak of an even, homogeneous and healthy soil after treatment with Imants spading machines.



Spading shaft with power harrow



No disturbing layer



Air



Water storage

ADVANTAGES OF SPADING

Imants spading machines take care of your soil

The rotating movement of the spades ensures optimal mixing. As a result, crop residues, manure or compost and green manure are mixed with the soil over the entire working depth so that they can be quickly broken down and absorbed.

The rotating movement of the spade ensures optimal mixing.

Crop residues or green manure do not form a layer at the bottom of the furrow. Because of the mixing over the entire working depth, the soil life can also benefit from the freshly applied organic material. Because the spade blades take soil samples of 25 to 30 cm (10 to 12 inch) and remove these from the underlying soil layer, an impermeable disturbing layer is not created at the bottom, the so-called ploughing furrow. This means that (heavy) precipitation can penetrate the deeper soil layers and replenish the groundwater. The loose structure that remains after spading not only allows water to penetrate, but air and roots can also penetrate deeper into the soil.

Because spading machines do not form a disturbing layer in the soil, capillary action remains intact, so rising groundwater can reach the roots of plants when they need it. During spading, the building soil is mixed, but not completely turned over. This preserves most of the soil temperature, reducing the time it takes for the soil to warm up. This results in faster germination. The deeper soil layers get time enough to warm up while the plants grow.

With an Imants spading machine the soil can be made ready for sowing or planting in 1 operation.

With an Imants rotary cultivator, the soil can be prepared for sowing or planting in one operation. The driven rake roller leaves an ideal seedbed behind. By combining operations with, for example, a light seeder, you not only save time and money but also the soil structure. All the above mentioned properties lead to a higher yield.

Capillary action



Maintaining soil temperature



Level seed bed



SERIES

Choices and specifications

27 series

Power
30 - 70 hp

Work width
120, 150, 160, 180 cm
47, 60, 63, 71 inch

Spading depth
15 - 30 cm / 6 - 14 inch



33 series

Power
55 - 110 hp

Work width
150, 170, 210, 250 cm
60, 67, 83, 98 inch

Spading depth
15 - 35 cm / 6 - 14 inch



40 series

Power
50 - 75 hp (K) or
110 - 160 pk (R)

Work width
150, 180, 200, 250, 300 cm
60, 71, 79, 98, 118 inch

Spading depth
15 - 45 cm / 6 - 18 inch





Digging
the
future

SPADING TECHNIQUE

The construction of the spading machine

Imants rotary spading machines work the soil by means of spades that are attached to the spade via a spade bracket. On the 27, 33 and 40 series, 4 spade brackets form a wreath. The number of whorls on the spit varies according to the working width. The 27 series spading axle is without scrapers. For the 33 and 40 series, the spading axle is available with or without scrapers. Depending on what you need on your farm Imants can advise the right spading machine.

Did you know that Imants also manufactures spading machines that can work superficially (from 8 cm or 3 inch working depth) but also very deep (up to 135 cm or 53 inch working depth)? Please contact us for the possibilities.

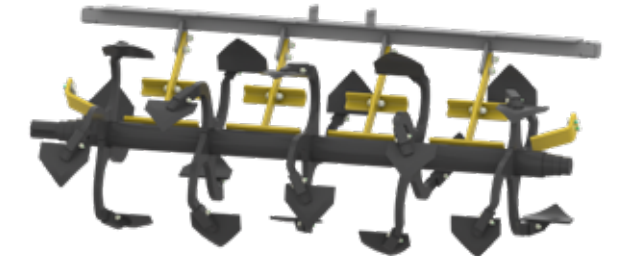
The SX spade blade

For use on all soil types except wet clay.

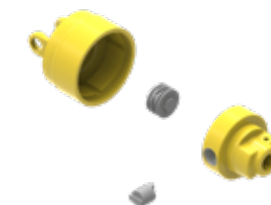
The spade blades of the 27, 33 and 40 series are easy to replace.



Picture of the 33SX210 spade blade without scrapers.



Picture of 33SX210 spade blade with scrapers (marked yellow).



The 27, 33 and 40 series spading machines are equipped with a cam clutch on the PTO shaft. This provides protection for the driveline.

WORKING DEEP

Subsoiling yes or no?

SX series

Depending on the model, the SX series has a minimum working depth of 15 cm (6"), with a maximum of approximately 45 cm (18"). In specific circumstances, working depths up to 55 cm (22") are possible. Ask your Imants advisor for more information. The blades loosen the soil over the full working width and mix manure, green manure or plant residues through the most biologically active part of the soil.

WX series

The WX series (only possible with the 33 and 40 series) is equipped with depth-adjustable tine legs between the rings, which loosen the soil deeper than the digging depth. The WX series has fewer digging blades than the comparable SX series version, but the soil is still worked over the full working width. The tine legs break up disturbing soil layers that are under the spade blades so that roots can also penetrate deeper into the soil.



Illustration of the 33WX
tine leg.



FIXATION

How do you want to leave the soil?

Driven power harrow

The Imants 27, 33 and 40 series spading machines can be equipped with a driven power harrow. This roller levels, crumbles and works in crop residues. The result is an ideal seedbed. It is the ideal roller for sandy and loamy soils.



Ring roller

The ring roller leaves a coarser seedbed and is suitable for all soil types. This roller slightly reduces the size of the soil and presses it a little so that a nice even, flat and solid seedbed is left behind.



Prisma roller

For heavier soil types in dry and humid conditions, the self-cleaning prism roller is recommended. This roller reduces the soil somewhat and presses the soil a little so that a nice even and solid seed bed is left behind.



Digging
the
future

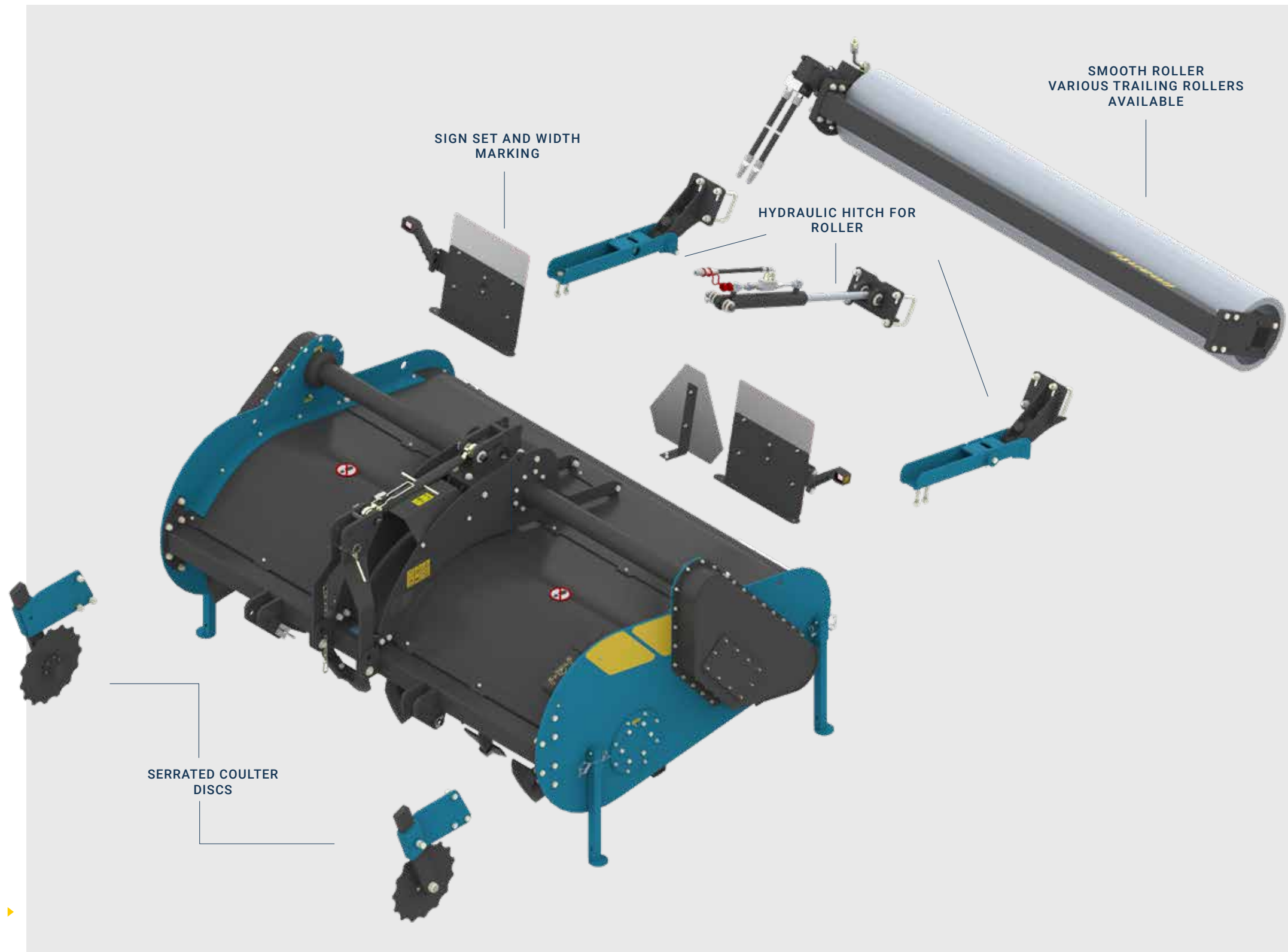


imants
Digging the future

OPTIONS WITH POWER HARROW

Options for the 33 series with power harrow

Unlike the 27 series, the 33 SX/WX series spading machines can be equipped with a number of options to suit your farm. The spading machines of this series with power harrow are suitable to leave a perfect seedbed under certain conditions. The driven power harrow will crumble and press the top layer. The tines also press the crop residues into the soil, creating a nice clean seedbed. If a hydraulically adjustable trailing roller is chosen, it is possible to press the ground more or less after working with the spindle.



Here you see a machine with a power harrow with all possible options. ▶
The 33SX210H has been chosen as the illustration.

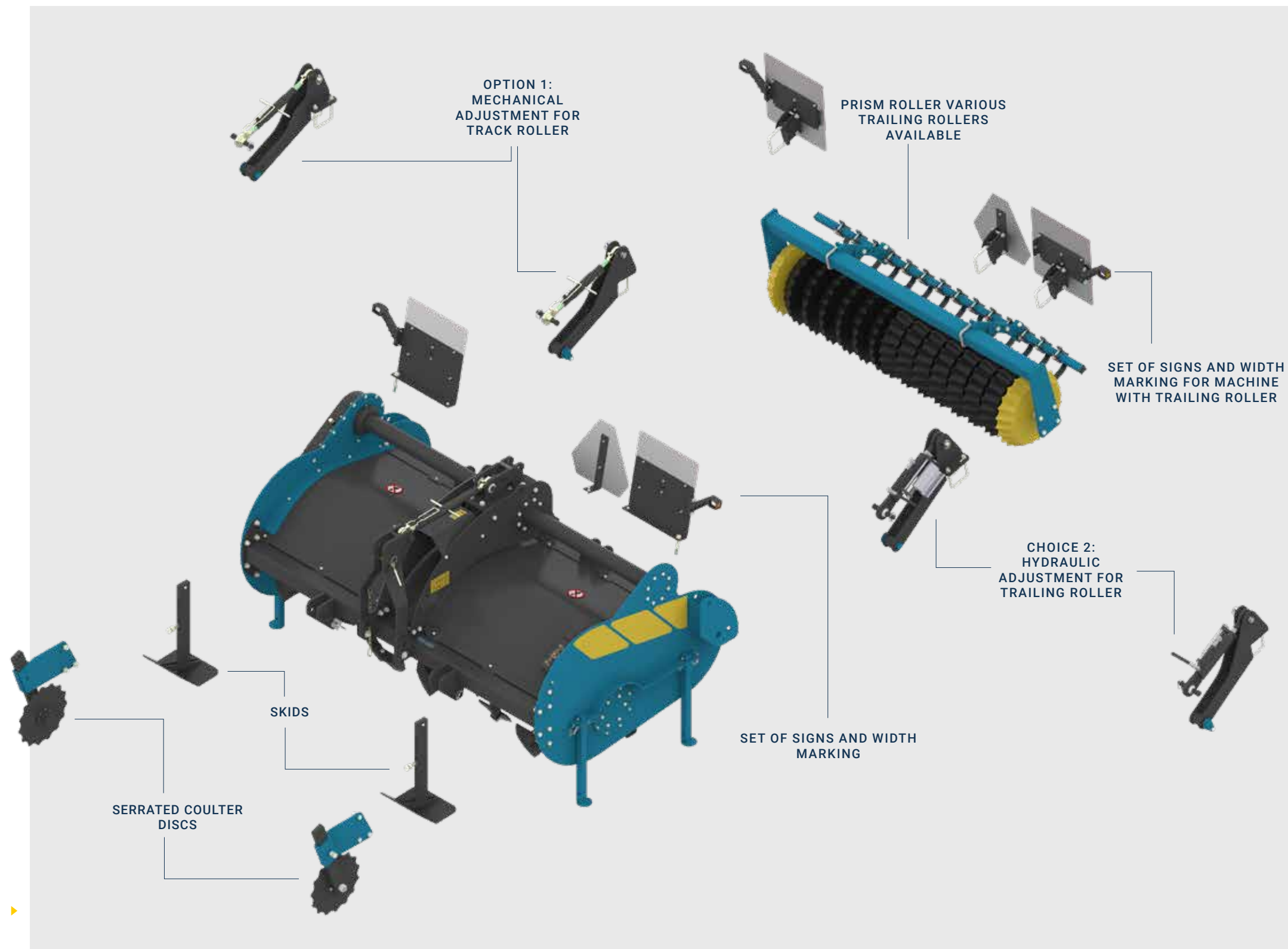
OPTIONS WITHOUT POWER HARROW

Options for the 33 series without power harrow

Unlike the 27 series, the 33 SX/WX series without rake roller spading machines can be equipped with a number of options to suit your operation. For example, you can choose from a number of different track rollers, which you can also adjust to vary the working depth.

You can choose from a number of options in order to make the spading machine fit in your company.

To prevent crop residue or green manure from rolling on the sidewall, the spading machines of this 33 SX/ WX series can also be fitted with harrow discs. These guide the organic material towards the spit or cut through it.



Here you see a machine without rake roller with all possible options. ▶
The 33SX210 has been chosen as the illustration.

40 SX/WX OPTIONS

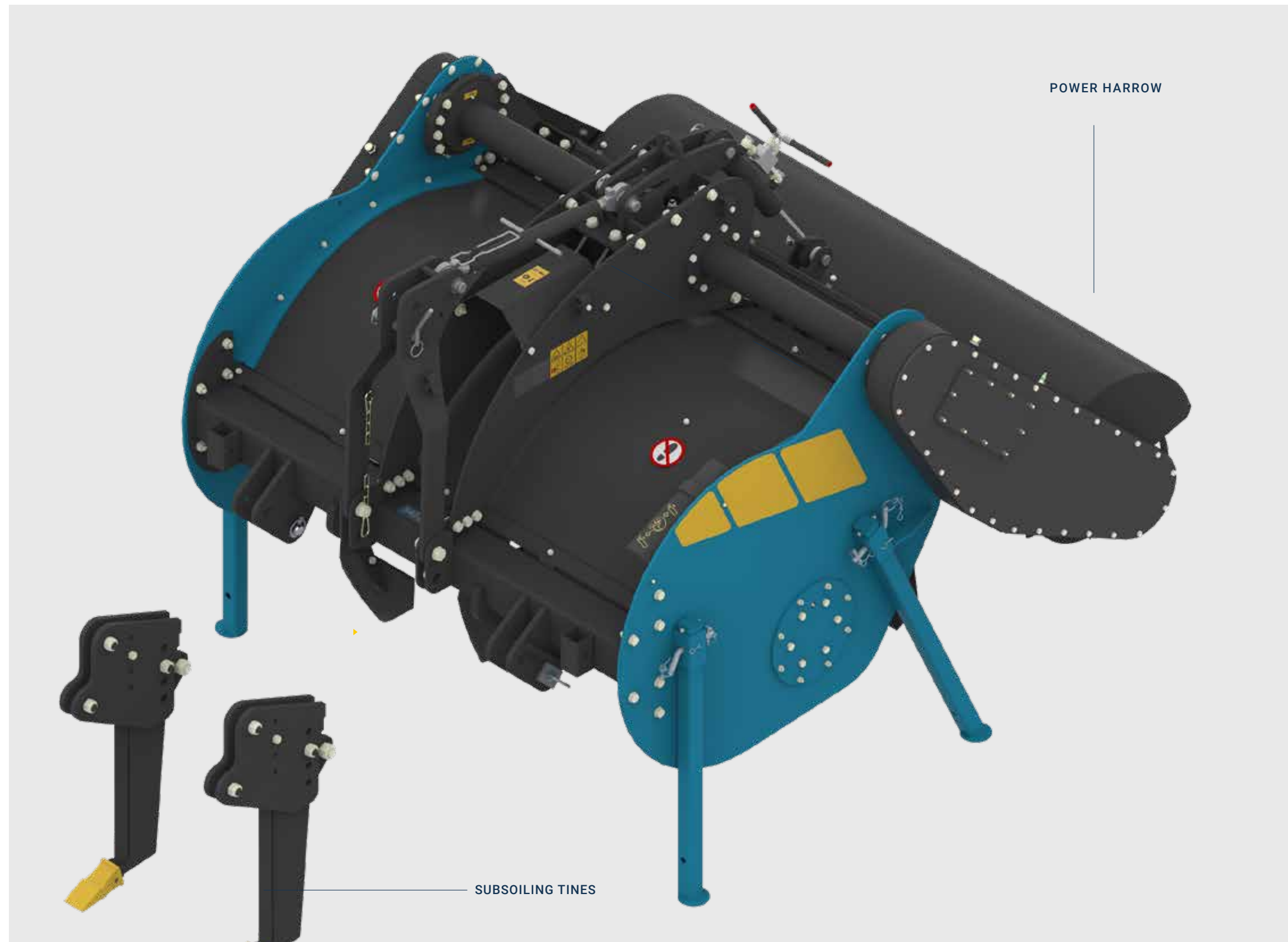
Options for the 40 series power harrow

To make the 40 series of spading machines fit your farm, you can choose from a number of options. The power harrow machines of this series are also suitable to leave a perfect seedbed under certain conditions. The driven power harrow will crumble and press the top layer. The tines also press the crop residues into the soil, creating a nice clean seedbed.

To make the spading machine fit in your company, you can choose from a number of options.

Specific to the width variant shown here are the built-in subsoiler tines. These tines loosen the soil to a greater depth (up to 65 cm / 26 inch, depending on the circumstances) without mixing. You can choose this option, for example, in order to remove even deeper layers of disturbance.

The 40SX150KH has been chosen as the illustration. Please contact us for the options of the model of your choice.



40 SX/WX OPTIONS

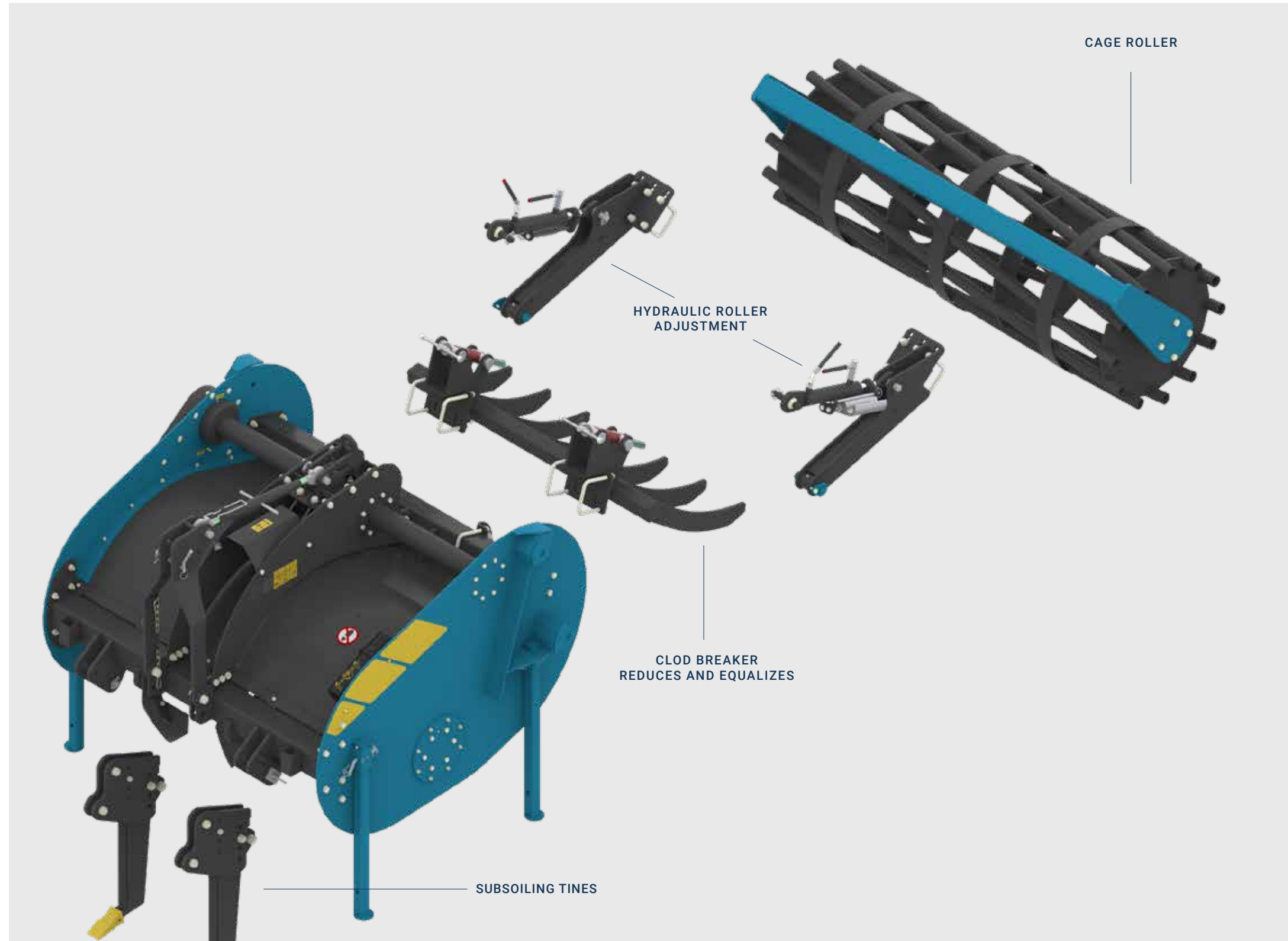
Options for the 40 series without power harrow

To make the 40 Series Spading Machines fit your business your business, you can choose from a number of options. For example, with this model you can not only choose from a number of different trailing rollers, but you can also adjust them to vary the working depth. Also, the spading machines from this series can be equipped with a clod breaker that further reduces and levels the dug up soil.

To make the spading machine fit in your company, you can choose from a number of options.

As with the 40 series machine with rake roller, the width variant shown here can also be equipped with built-in tilling legs.

The 40SX150K has been chosen as the illustration. Please contact us for the options of the model of your choice.



| Type | Working width | Overall width | # of blades | Required power (hp) |
|-----------|-------------------|-------------------|-------------|---------------------|
| 32S120L | 120 cm / 47 inch | 137 cm / 54 inch | 8 | 18 |
| 32S120LH | 120 cm / 47 inch | 140 cm / 55 inch | 8 | 22 |
| 27SX120R | 120 cm / 47 inch | 139 cm / 55 inch | 12 | 30 |
| 27SX150R | 150 cm / 60 inch | 169 cm / 67 inch | 16 | 35 |
| 27SX160R | 160 cm / 63 inch | 179 cm / 70 inch | 16 | 35 |
| 27SX180R | 180 cm / 71 inch | 199 cm / 78 inch | 16 | 45 |
| 27SX120RH | 120 cm / 47 inch | 141 cm / 56 inch | 12 | 30 |
| 27SX150RH | 150 cm / 60 inch | 171 cm / 67 inch | 16 | 40 |
| 27SX160RH | 160 cm / 63 inch | 181 cm / 71 inch | 16 | 40 |
| 27SX180RH | 180 cm / 71 inch | 201 cm / 79 inch | 16 | 48 |
| 33SX170K | 170 cm / 67 inch | 190 cm / 75 inch | 16 | 65 |
| 33SX210K | 210 cm / 83 inch | 230 cm / 91 inch | 20 | 70 |
| 33SX250K | 250 cm / 98 inch | 270 cm / 106 inch | 24 | 75 |
| 33SX150KH | 150 cm / 60 inch | 175 cm / 69 inch | 16 | 55 |
| 33SX170KH | 170 cm / 67 inch | 195 cm / 77 inch | 16 | 65 |
| 33SX210KH | 210 cm / 83 inch | 235 cm / 93 inch | 20 | 70 |
| 33SX250KH | 250 cm / 98 inch | 275 cm / 108 inch | 24 | 75 |
| 33WX250KH | 250 cm / 98 inch | 275 cm / 108 inch | 24 | 75 |
| 40SX150K | 150 cm / 60 inch | 176 cm / 69 inch | 12 | 50 |
| 40SX180K | 180 cm / 71 inch | 206 cm / 81 inch | 16 | 50 |
| 40SX200K | 200 cm / 79 inch | 226 cm / 89 inch | 16 | 55 |
| 40SX250R | 250 cm / 98 inch | 277 cm / 109 inch | 20 | 110 |
| 40SX300R | 300 cm / 118 inch | 328 cm / 129 inch | 24 | 110 |
| 40SX150KH | 150 cm / 60 inch | 180 cm / 71 inch | 12 | 50 |
| 40SX180KH | 180 cm / 71 inch | 210 cm / 83 inch | 16 | 50 |
| 40SX200KH | 200 cm / 79 inch | 230 cm / 91 inch | 16 | 55 |
| 40SX250RH | 250 cm / 98 inch | 282 cm / 111 inch | 20 | 110 |
| 40SX300RH | 300 cm / 118 inch | 334 cm / 131 inch | 24 | 110 |
| 40WX300RH | 300 cm / 118 inch | 334 cm / 131 inch | 20 | 110 |

| Max. power (hp) | Weight (kg)* | power harrow** | tines | Other |
|-----------------|--------------------|----------------|---------------|---|
| 30 | 250 kg / 550 lbs | no | no | Ideal speed ***: 1 to 3.5 km/u (540 rpm) or 0,6 to 2,2 m/h Spading depth: 15-30 cm / 6-14 inch **** Lifting cat. 1+2 |
| 30 | 335 kg / 737 lbs | yes | no | |
| 70 | 455 kg / 1001 lbs | no | no | |
| 70 | 520 kg / 1144 lbs | no | no | |
| 70 | 540 kg / 1188 lbs | no | no | |
| 70 | 570 kg / 1254 lbs | no | no | |
| 70 | 615 kg / 1353 lbs | yes | no | |
| 70 | 685 kg / 1507 lbs | yes | no | |
| 70 | 700 kg / 1540 lbs | yes | no | |
| 70 | 730 kg / 1606 lbs | yes | no | |
| 90 | 780 kg / 1716 lbs | no | no | Ideal speed ***: 1 to 3.5 km/u (540 rpm) or 0,6 to 2,2 m/h Spading depth: 15-35 cm / 6-14 inch **** Lifting cat. 2 |
| 90 | 800 kg / 1760 lbs | no | no | |
| 90 | 880 kg / 1936 lbs | no | no | |
| 90 | 870 kg / 1914 lbs | yes | no | |
| 90 | 930 kg / 2046 lbs | yes | no | |
| 90 | 1000 kg / 2200 lbs | yes | no | |
| 90 | 1100 kg / 2420 lbs | yes | no | |
| 110 | 1200 kg / 2640 lbs | yes | 3 pcs | |
| 75 | 950 kg / 2090 lbs | no | Option, 2 pcs | |
| 75 | 990 kg / 2178 lbs | no | no | |
| 75 | 1050 kg / 2310 lbs | no | no | |
| 160 | 1630 kg / 3586 lbs | no | no | |
| 160 | 1775 kg / 3905 lbs | no | no | |
| 75 | 1130 kg / 2486 lbs | yes | Option, 2 pcs | |
| 75 | 1220 kg / 2684 lbs | yes | no | |
| 75 | 1280 kg / 2816 lbs | ja | no | |
| 160 | 1880 kg / 4136 lbs | ja | no | |
| 160 | 2080 kg / 4576 lbs | ja | no | |
| 160 | 2350 kg / 5170 lbs | ja | 5 pcs | |

* The above weight is indicative without options and without roller (except the rake roller machines).

** Machines without rake roller can optionally be equipped with various other rollers.

*** The actual driving speed may vary depending on the application.

**** Exception to the maximum working depth; 32 series have a maximum working depth of 35 cm / 14 inch.

Digging the future



ROTAVATING

Imants JNC rotavators

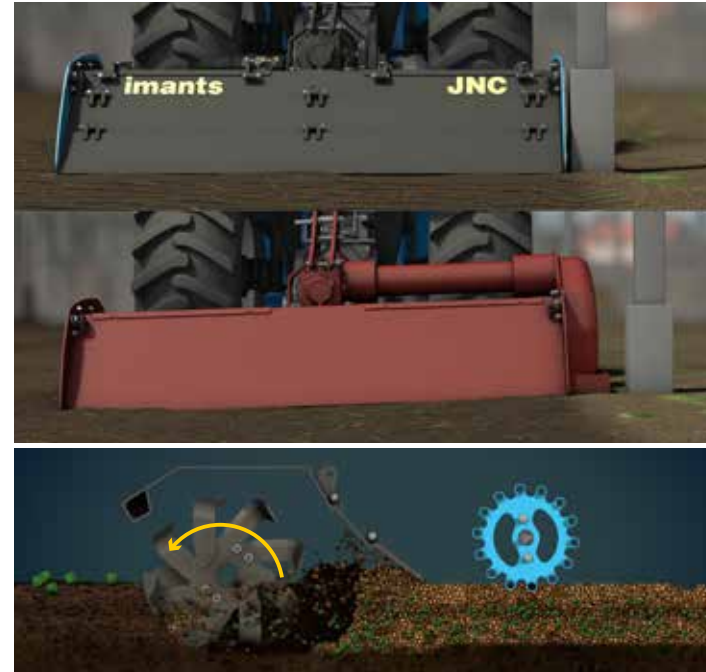
With over 135 years of experience, Imants can safely say that it has learned how to optimize tillage. The Imants rotavators are no exception. With a quick rotating movement, working green manure or crop residues superficially and making the soil very fine, that is milling.

Imants JNC rotavators are unique in their kind due to the center drive.

Imants JNC rotavators are unique in their kind due to the central drive. As a result, the working width and transport width are equal and the soil is also loosened in the middle. Because there is neither a drive nor a skid on the side, the machine sinks evenly into the ground over the entire width. This is in contrast to a rotavator with a skid which runs on one side on top of the raw soil and on the other side sinks into the treated soil. This creates a skewed milling pattern with a ridge on the side.

This so-called "tile profile" has a negative effect. Finally, the lack of a side drive means that the JNC rotavator can work very close to obstacles. Think for example of the posts in a greenhouse.

Top JNC rotavator with center drive, flat rotavating pattern and drive up to obstacle. Bottom picture shows rotavator with side drive, chance of roof tile profile, not driving up to obstacle.



Machining regular rotary spindle, the rotavator blades rotating in the direction of travel.

Imants has 2 types of rotavators in its range. A standard rotavator and an otoprotavator. The Imants standard rotavators work the soil using Imants rotavator blades that rotate in the direction of travel.

These self-cleaning rotavator blades have a special position that ensures that no rotavator sole is created. The Imants rotavator blades are made up of flanges. One flange consists of four Imants rotavator blades. The number of flanges varies according to the working width.

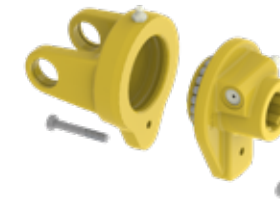
Scan me for the animation movie



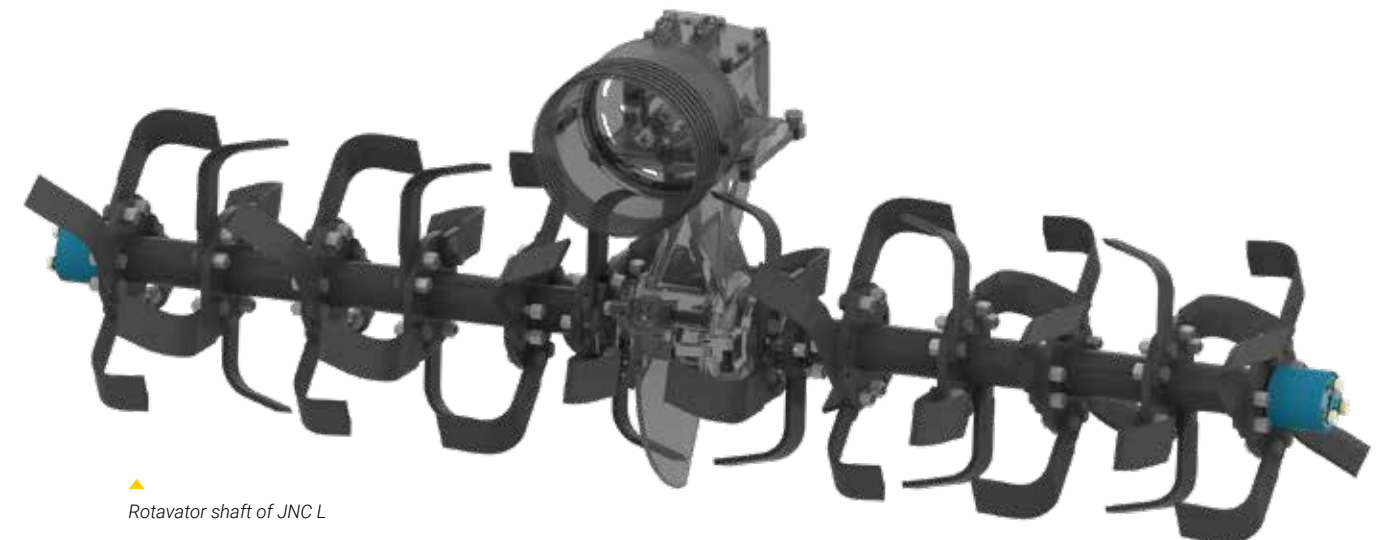
ROTAVATING TECHNIQUE

Construction of the rotavating machine

Depending on what you need on your farm Imants can advise the right rotavator. There are rotavator machines suitable for use behind light (L) or heavier (Z) tractors.



All rotavators are equipped with a shear bolt protection on the PTO shaft. Optionally with a cam clutch on the PTO shaft. These provide a security for the driveline.



Rotavator shaft of JNC L

The Imants rotavator blade

The Imants rotavator blade is easy to replace. The unique position of the milling blade ensures a self-cleaning effect.



ROTAVATORS

Overtop Rotavators

Imants overtop rotavators work the soil by using Imants blades. These self-cleaning blades have a special position which ensures that no milling sole is created.

The Imants rotavating blades are made up of flanges. One flange consists of four Imants blades. The number of flanges varies according to the working width. The overtop rotavators rotate against the direction of travel while the regular rotavators rotate in the direction of travel.

Because these rotavators rotate against the direction of travel, the soil is thrown against a bar rack. Clods (and possibly stones or crop residues) are forced down by this bar rack, while fine soil is thrown through the bar rack.

The result is that the soil is deposited even finer and in 1 working passage a clean seedbed is made.

The self-cleaning blades have a special position that ensures that no milling sole is created.

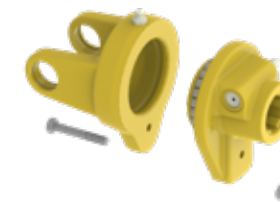


▲ Working of the overtop rotavator, the rotavator which turns against the direction of travel. Residue is milled in.

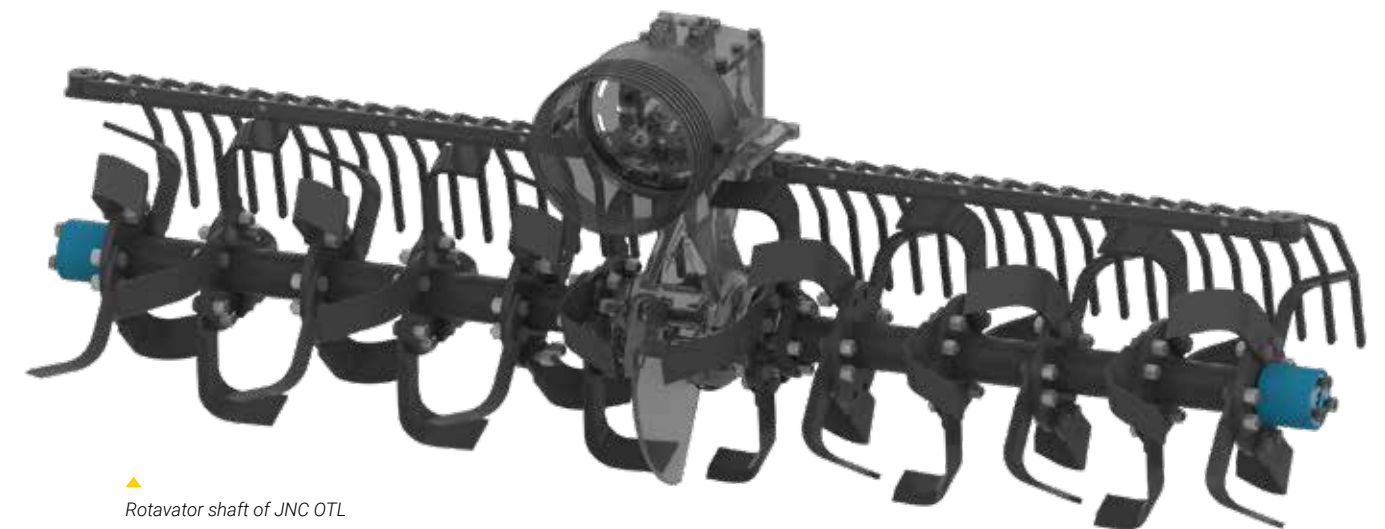
ROTAVATING TECHNIQUE

Construction of the overtop rotavating machine

Depending on what you need on your farm Imants can advise the right rotavator. There are overtop rotavator machines suitable for use behind light (L) or heavier (Z) tractors.



▲ All rotavators are equipped with a shear bolt protection on the PTO shaft. Optionally with a cam clutch on the PTO shaft. These provide a security for the driveline.



▲ Rotavator shaft of JNC OTL

The Imants rotavator blade

The Imants rotavator blade is easy to replace. The unique position of the milling blade ensures a self-cleaning effect.



Digging
the
future

SERIES

Rotavating choices and specifications

Type JNC (OT)L

Power
up to 35 hp

Working width*
80, 90, 115, 135, 160, 170 cm
31, 35, 45, 53, 63, 67 inch



Type JNC (OT)Z

Power
up to 75 hp

Working width*
135, 160, 170, 185, 210, 230 of 250 cm
53, 63, 67, 73, 83, 91, 98 inch



* Different working widths on request.

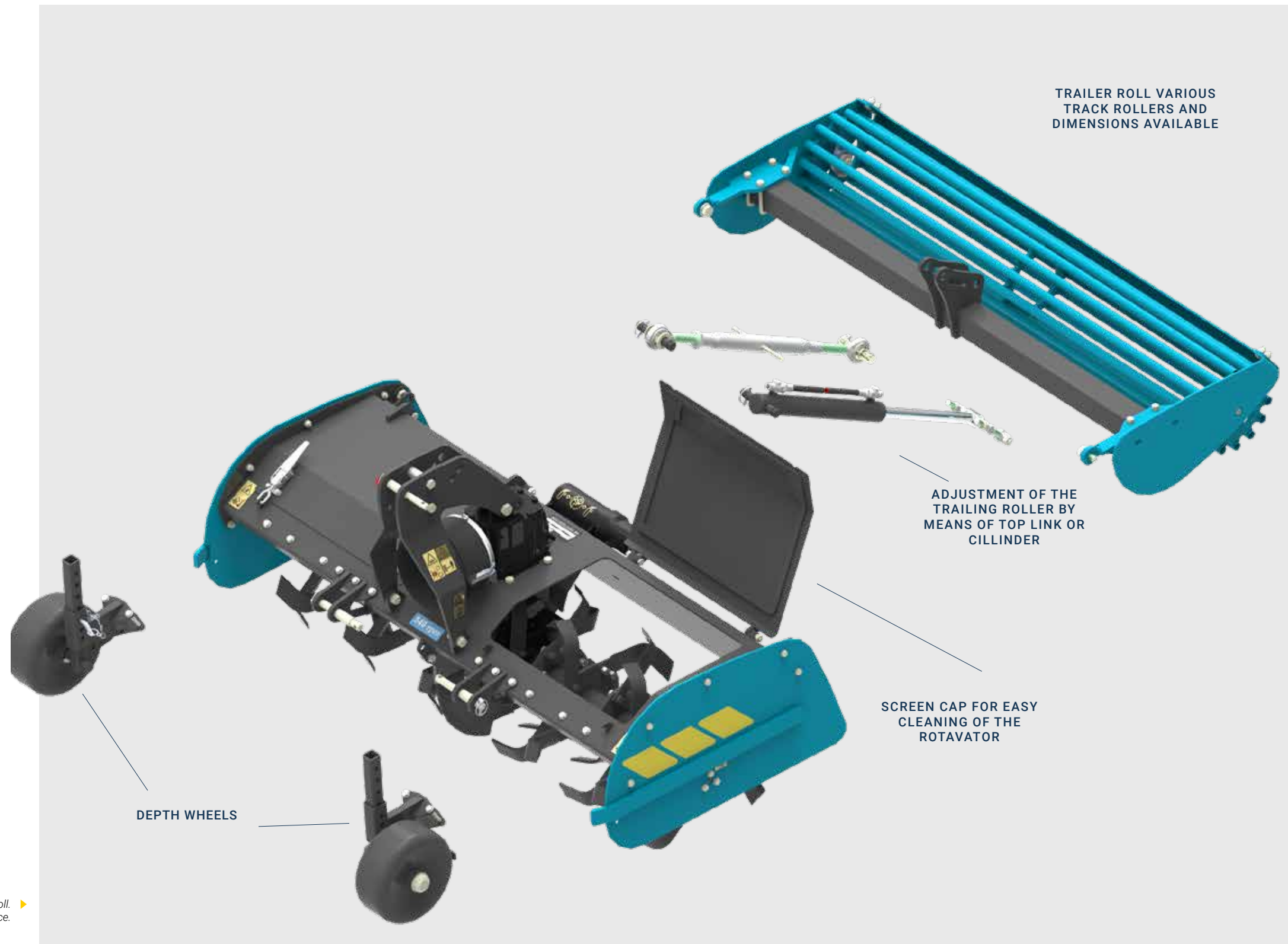
JNC ROTAVATOR OPTIONS

Options for the JNC (overtop) rotavators

To make the JNC rotavators and overtop rotavator machines fit completely into your company, you can choose from a number of options. You can not only choose from depth wheels and several different rollers (cage roller, roller etc.), but you can also optionally adjust them by means of side shift and / or equip them with top link or cylinder.

To make the JNC rotavators fit your company completely, you can choose from several options.

The (overtop) rotavators can also be used in the front. Ask your Imants salesman for the possibilities.



As picture is chosen for the JNC Z170 with 273mm bar roll. Please contact us for the options of the model of your choice.

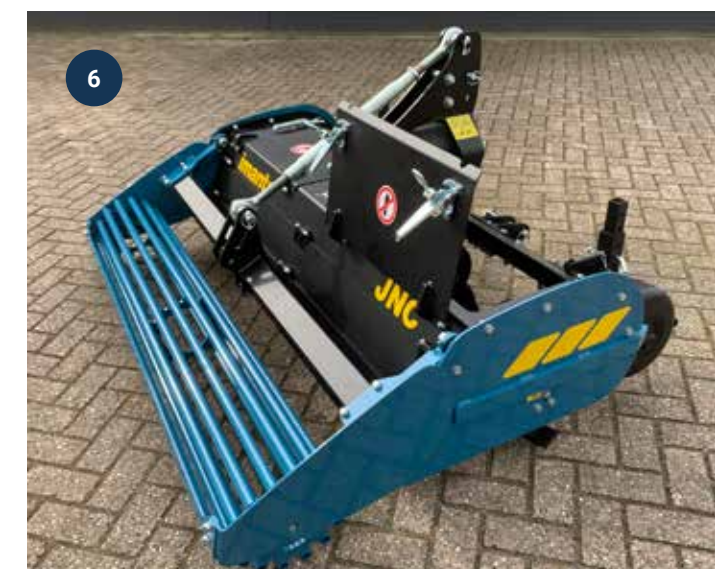
Digging the future

ADVANTAGES

Advantages of the Imants rotavator

With over 135 years of experience, Imants knows what makes a good (overtop) rotavator. This results in several features that are normal on Imants rotavators and make them unique.

1. Two-piece tailstock for flat milling result
2. Center drive so that working width and transport widths are equal
3. Different types of rollers
4. Adjustable depth wheels (10mm)
5. Spindle or hydraulic roller adjustment
6. Easy cleaning thanks to screen caps



| Type | Working width | # of blades | Required power (hp) | Weight* |
|--------------|------------------|-------------|---------------------|------------------|
| JNC (OT)L80 | 80 cm / 31 inch | 24 | 15 | 180 kg / 396 lbs |
| JNC (OT)L90 | 90 cm / 35 inch | 24 | 17 | 200 kg / 440 lbs |
| JNC (OT)L115 | 115 cm / 45 inch | 32 | 20 | 220 kg / 484 lbs |
| JNC (OT)L135 | 135 cm / 53 inch | 40 | 25 | 230 kg / 506 lbs |
| JNC (OT)L160 | 160 cm / 63 inch | 48 | 30 | 270 kg / 594 lbs |
| JNC (OT)L170 | 170 cm / 67 inch | 48 | 30 | 290 kg / 638 lbs |

| | | | | |
|--------------|------------------|----|----|-------------------|
| JNC (OT)Z135 | 135 cm / 53 inch | 40 | 35 | 345 kg / 759 lbs |
| JNC (OT)Z160 | 160 cm / 63 inch | 48 | 50 | 375 kg / 825 lbs |
| JNC (OT)Z170 | 170 cm / 67 inch | 48 | 53 | 395 kg / 869 lbs |
| JNC (OT)Z185 | 185 cm / 73 inch | 56 | 60 | 415 kg / 913 lbs |
| JNC (OT)Z210 | 210 cm / 83 inch | 64 | 70 | 450 kg / 990 lbs |
| JNC (OT)Z230 | 230 cm / 91 inch | 64 | 70 | 460 kg / 1012 lbs |
| JNC (OT)Z250 | 250 cm / 98 inch | 72 | 70 | 480 kg / 1056 lbs |

*Weight does not include trailing roller.

All rotavators include a PTO with shear bolt protection and Imants rotavator blades.

All variants available as standard rotavator or overtop rotavator.

We recommend depth wheels with the standard rotavator if ordered without a roller.

We recommend using a bar roller or smooth roller for nice rotavating work with an overtop rotavator (no depth wheels needed).





Digging the future

Imants BV
Turnhoutseweg 29
5541 NV REUSEL, NL

Phone +31 (0)497-642433

www.imants.com
info@imants.nl

Dutch CoC. 17154317
VAT No NL811935371B01

*The information in this brochure is subject to change. No rights can be derived from the specifications.
So always contact your Imants contact persons for advice.*

Dealer:

imants[®]
Digging the future

2005281122